

12.1 PLATFORMS

12.1.1 FW RANGE



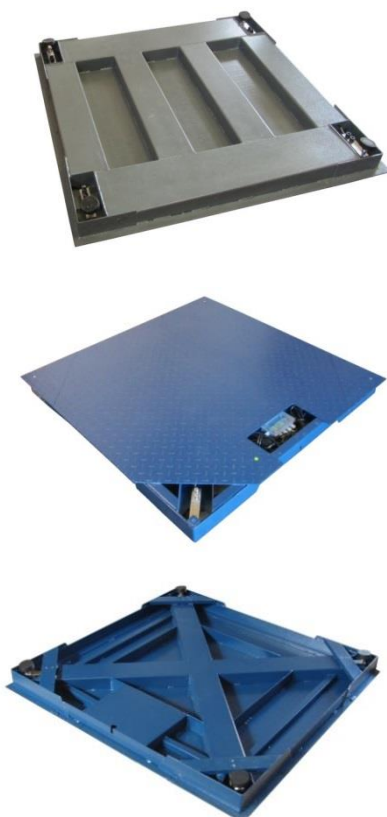
PAINTED MILD STEEL PLATFORMS

- 4 OIML R60 C3 approved IP67 mild steel load cells
- Load cell cables and junction box located within fabrication.
- Removable side plate for easy access to junction box with summing board.
- Threaded eyebolt holes for easy lifting.
- 5mm top plate.
- Other capacities and sizes available, POA.



MODEL	PLATFORM SIZE mm	MAXIMUM CAPACITY kg	TOTAL LOAD CELL CAPACITY kg	PRICE £
FW-0808	800 x 800 x 95	1000	2000	325.00
FW-1010	1000 x 1000 x 105	2000	4000	345.00
FW-1212	1200 x 1200 x 105	3000	6000	379.00
FW-1515	1500 x 1500 x 110	3000	6000	495.00
FW-1812	1800 x 1200 x 110	3000	6000	645.00
FW-RP-0808	800 x 620	Mild steel ramp		105.00
FW-RP-1010	1000 x 620			125.00
FW-RP-1212	1200 x 750			145.00
FW-RP-1515	1500 x 750			175.00
FW-PF-1010	Mild steel pit frame			75.00
FW-PF-1212				95.00
FW-PF-1515				125.00
EXTRAS	ATEX load cells stainless steel IP67 c/w feet			495.00

12.1.2 FWH AND FWHX RANGE



HEAVY DUTY PAINTED MILD STEEL PLATFORMS

- 4 OIML R60 C3 approved IP67 mild steel load cells
- Load cell cables and junction box located within fabrication.
- FWH: wide box section sub-frame for extra strength. Removable side plate for easy access to junction box with summing board.
- FWHX: with heavier duty construction, removable top and corner sections for access to junction box and load cells making it ideal for dormant application.
- Threaded eyebolt holes for easy lifting.
- 5mm top plate.
- Other capacities and sizes available, POA.



MODEL	PLATFORM SIZE mm	MAXIMUM CAPACITY kg	TOTAL LOAD CELL CAPACITY kg	PRICE £
FWH-1010	1000 x 1000 x 105	2000	4000	395.00
FWH-1212	1200 x 1200 x 105	3000	6000	425.00
FWH-1515	1500 x 1500 x 110	3000	6000	595.00
FWH-RP-1010	1000 x 620	Mild steel ramp		125.00
FWH-RP-1212	1200 x 750			145.00
FWH-RP-1515	1500 x 750			175.00
FWHX-1010	1000 x 1000 x 105	2000	4000	465.00
FWHX-1212	1200 x 1200 x 105	3000	6000	535.00
FWHX-1515	1500 x 1500 x 110	3000	6000	645.00
FWHX-RP-1010	1000 x 620	Mild steel ramp		165.00
FWHX-RP-1212	1200 x 750			195.00
FWHX-RP-1515	1500 x 750			215.00
FWHX-PF-1010	Mild steel pit frame			125.00
FWHX-PF-1212				145.00
FWHX-PF-1515				185.00
EXTRAS	ATEX load cells stainless steel IP67 c/w feet			495.00

Prices exclude delivery, VAT and stamping fees (unless stated)

PLATFORMS & BASES	INDICATORS	SYSTEC	RINSTRUM	PRINTER & PERIPHERALS	LOAD CELLS	WEIGHTS	CERTIFICATION & DELIVERY	SPARES
-------------------	------------	--------	----------	-----------------------	------------	---------	--------------------------	--------

12.1.3 FWS RANGE



ALL STAINLESS STEEL PLATFORMS

- Fitted with stainless steel IP68 C3 load cells.
- Load cell cables and stainless steel junction box located within fabrication.
- Removable side plate for easy access to junction box with summing board.
- Threaded eyebolt holes for easy lifting.



MODEL	PLATFORM SIZE mm	MAXIMUM CAPACITY kg	TOTAL LOAD CELL CAPACITY kg	PRICE £
FWS-0808	800 x 800 x 95	1000	4000	995.00
FWS-1010	1000 x 1000 x 105	2000	4000	1045.00
FWS-1212	1200 x 1200 x 105	3000	6000	1195.00
FWS-1515	1500 x 1500 x 105	3000	6000	1465.00
FWS-RP-0808	800 x 620	Stainless steel ramp		285.00
FWS-RP-1010	1000 x 620			325.00
FWS-RP-1212	1200 x 750			395.00
FWS-RP-1515	1500 x 750			425.00
EXTRAS	ATEX load cells stainless steel IP67 c/w feet			495.00

12.1.4 DT RANGE



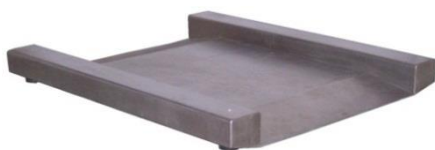
PAINTED MILD STEEL DRIVE THROUGH PLATFORM

- Ultra low profile with integral ramps.
- IP67 R60 approved mild steel load cells.



MODEL	WORKING AREA mm	FOOTPRINT mm	MAXIMUM CAPACITY kg	TOTAL LOAD CELL CAPACITY kg	PRICE £
DT-7575	750 x 750	1105 x 990 x 110	1000	2000	395.00
DT-1010	1000 x 1000	1400 x 1240 x 110	1000	2000	445.00
DT-1212	1200 x 1200	1600 x 1400 x 110	1000	2000	495.00
EXTRAS	ATEX load cells stainless steel IP67 c/w feet				495.00

12.1.5 DT-S RANGE



ALL STAINLESS STEEL DRIVE THROUGH PLATFORM

- Fitted with stainless steel IP68 C3 load cells.
- Ultra low profile with integral ramps.

MODEL	WORKING AREA mm	FOOTPRINT mm	MAXIMUM CAPACITY kg	TOTAL LOAD CELL CAPACITY kg	PRICE £
DT-S-7575	750 x 750	1105 x 990 x 110	1000	2000	1145.00
DT-S-1010	1000 x 1000	1400 x 1240 x 110	1000	2000	1325.00
DT-S-1212	1200 x 1200	1600 x 1400 x 110	1000	2000	1795.00
EXTRAS	ATEX load cells stainless steel IP67 c/w feet				495.00

12.1.6 FWP RANGE



MILD STEEL PAINTED PORTABLE PLATFORM

- C3 alloy steel IP67 rated load cells.
- Two handles for easy transportation.



MODEL	PLATFORM SIZE mm	MAXIMUM CAPACITY kg	TOTAL LOAD CELL CAPACITY kg	PRICE £
FWP-1008	1000 x 800 x 140	600	2000	395.00

Prices exclude delivery, VAT and stamping fees (unless stated)

PLATFORMS & BASES	INDICATORS	SYSTEC	RINSTRUM	PRINTER & PERIPHERALS	LOAD CELLS	WEIGHTS	CERTIFICATION & DELIVERY	SPARES
-------------------	------------	--------	----------	-----------------------	------------	---------	--------------------------	--------

12.1.7 FLPS RANGE



HINGED STAINLESS STEEL PLATFORMS

- Fitted with C3 approved IP68 rated stainless steel load cells.
- Gas damped struts for lowering.
- Supporting strut when open.
- 304 grade stainless steel.
- Optional stainless steel pit frame for dormant installation.
- ATEX version available - POA.



MODEL	PLATFORM SIZE mm	CAPACITY kg	TOTAL LOAD CELL CAPACITY kg	PRICE £
FLPS-1010	1000 x 1000	3000	6000	1295.00
FLPS-1212	1200 x 1200	3000	6000	1495.00
FLPS-1512	1500 x 1200	3000	6000	1695.00
FLPS-1515	1500 x 1500	3000	6000	1895.00
FLPS-PF-1010	Stainless steel pit frame			245.00
FLPS-PF-1212				315.00
FLPS-PF-1512				375.00
FLPS-PF-1515				445.00

12.1.8 FWHP RANGE



HIGH PRECISION HEAVY DUTY POWDER COATED MILD STEEL PLATFORM

- Two piece construction. 1:30,000 accuracy.
- Fitted with C3 ATEX approved hermetically sealed IP68 rated stainless steel load cells.
- IP67 rated stainless steel junction box with braided steel load cell cable.
- No external levelling feet so only suitable for installation on smooth and level surface.



MODEL	PLATFORM SIZE mm	MAXIMUM CAPACITY kg	MINIMUM DIVISION g	TOTAL LOAD CELL CAPACITY kg	PRICE £
FWHP-1010-1.5	1000 x 1000	1500	50	2000	1395.00
FWHP-1010-3		3000	100	6000	1395.00
FWHP-1212-1.5	1200 x 1200	1500	50	2000	1495.00
FWHP-1212-3		3000	100	6000	1495.00

12.1.9 FWHC RANGE



POWDER COATED HIGH CAPACITY MILD STEEL PLATFORM

- Extra heavy duty construction.
- Fitted with alloy steel IP67 or IP68 rated C3 shear beam load cells.
- Made to order, delivery time TBA.
- **Price includes delivery direct to site.**



MODEL	PLATFORM SIZE mm	MAXIMUM CAPACITY t	TOTAL LOAD CELL CAPACITY t	PRICE £
FWHC-2015-5	2000 x 1500 x 370	5	8	2095.00
FWHC-2015-10		10	20	2495.00
FWHC-3020-10	3000 x 2000 x 370	10	20	3595.00
FWHC-3020-20		20	40	4495.00
FWHC-4030-20	4000 x 3000 x 370	20	40	9295.00
FWHC-4030-30		30	40	9595.00

Prices exclude delivery, VAT and stamping fees (unless stated)

PLATFORMS & BASES	INDICATORS	SYSTEC	RINSTRUM	PRINTER & PERIPHERALS	LOAD CELLS	WEIGHTS	CERTIFICATION & DELIVERY	SPARES
-------------------	------------	--------	----------	-----------------------	------------	---------	--------------------------	--------

12.1.10 FWC RANGE



POWDER COATED MILD STEEL CYLINDER PLATFORM

- Heavy duty construction.
- OIML R60 C3 approved load cells.
- Pivoting corner mounts for load.
- No external levelling feet so only suitable for installation on smooth and level surface.



MODEL	PLATFORM SIZE mm	MAXIMUM CAPACITY kg	LOAD CELL CAPACITY kg	PRICE £
FWC-1208-1.5	1200 x 800 x	1500	4000	695.00
FWC-1208-3	400	3000	6000	695.00

12.1.11 FWLS RANGE



POWDER COATED MILD STEEL LIVESTOCK PLATFORM

- C3 nickel plated alloy steel IP67 rated load cells.
- Heavy duty construction. Wash down design.
- Load cells and junction box mounted in top of fabrication.
- Also available in stainless steel.
- Other sizes and capacities available.



MODEL	PLATFORM SIZE mm	MAXIMUM CAPACITY kg	TOTAL LOAD CELL CAPACITY kg	PRICE £
FWLS-1805	1800 x 500 x 1250	1500	4000	745.00
FWLS-2005	2000 x 500 x 1250	1500	4000	795.00

12.2 WEIGHBEAMS

12.2.1 UF RANGE

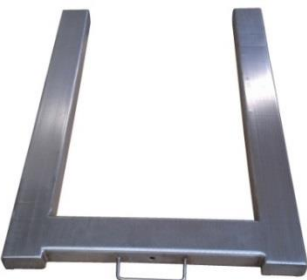


POWDER COATED MILD STEEL U FRAME

- Single hand grip.
- Wheels for easy transportation.
- IP67 steel load cells.
- Beam width 120mm. Height 90mm. Interior opening 600mm.

MODEL	MAXIMUM CAPACITY kg	TOTAL LOAD CELL CAPACITY kg	PRICE £
UF-3T	3000	4000	295.00

12.2.2 UF-S RANGE



ALL STAINLESS STEEL U FRAME

- Single hand grip.
- Wheels for easy transportation.
- Stainless steel IP68 load cells.
- Beam width 120mm. Height 90mm. Interior opening 600mm.

MODEL	MAXIMUM CAPACITY kg	TOTAL LOAD CELL CAPACITY kg	PRICE £
UF-S-3T	3000	4000	945.00

Prices exclude delivery, VAT and stamping fees (unless stated)

PLATFORMS & BASES	INDICATORS	SYSTEC	RINSTRUM	PRINTER & PERIPHERALS	LOAD CELLS	WEIGHTS	CERTIFICATION & DELIVERY	SPARES
-------------------	------------	--------	----------	-----------------------	------------	---------	--------------------------	--------

12.2.3 WB-L RANGE



SHORT WEIGH BEAMS

- Fully enclosed design. Single hand grip.
- C3 bund end load cells.
- Beam width 100mm. 80mm diameter self-levelling rubber feet.
- Each beam weighs 15kg.



MODEL	PLATFORM SIZE mm	MAXIMUM CAPACITY kg	TOTAL LOAD CELL CAPACITY kg	PRICE £
WB-L-3T	800 x 100 x 60	3000	1000	295.00

12.2.4 WB-M RANGE



POWDER COATED MILD STEEL MEDIUM DUTY WEIGH BEAMS

- Hand grip on one end with a wheel on the other end.
- IP67 steel load cells.
- Beam width 120mm. 90mm diameter rubber feet.
- Each beam weighs 16kg.

MODEL	PLATFORM SIZE mm	MAXIMUM CAPACITY kg	TOTAL LOAD CELL CAPACITY kg	PRICE £
WB-M-3T	1200 x 120 x 90	3000	6000	295.00

12.2.5 WB-H RANGE



POWDER COATED MILD STEEL HEAVY DUTY WEIGH BEAMS

- Single hand grip.
- Recessed end to protect load cell cable socket.
- IP67 steel load cells.
- Beam width 150mm. 90mm diameter rubber feet.
- Heavy duty construction, each beam weighs 29kg.

MODEL	PLATFORM SIZE mm	MAXIMUM CAPACITY kg	TOTAL LOAD CELL CAPACITY kg	PRICE £
WB-H-3T	1200 x 150 x 110	3000	4000	695.00

12.2.6 WB-S RANGE



ALL STAINLESS STEEL WEIGH BEAMS

- Hand grip on one end with a wheel on the other end.
- Stainless steel IP68 non approved load cells.
- Beam width 120mm. 90mm diameter rubber feet.
- Heavy duty construction, each beam weighs 17kg.

MODEL	PLATFORM SIZE mm	MAXIMUM CAPACITY kg	TOTAL LOAD CELL CAPACITY kg	PRICE £
WB-S-3T	1200 x 120 x 90	3000	6000	845.00

Prices exclude delivery, VAT and stamping fees (unless stated)

PLATFORMS & BASES	INDICATORS	SYSTEC	RINSTRUM	PRINTER & PERIPHERALS	LOAD CELLS	WEIGHTS	CERTIFICATION & DELIVERY	SPARES
-------------------	------------	--------	----------	-----------------------	------------	---------	--------------------------	--------

12.3 PALLET TRUCK SCALES

12.3.1 TA TRUCK SCALE



MILD STEEL PALLET TRUCK SCALE

- Heavy duty construction.
- IP67 mild steel load cells.
- Lifting height 75-190mm.
- Forks 1180 x 160mm (l x w). Interior opening 230mm.



MODEL	MAXIMUM CAPACITY kg	DIVISION kg	TOTAL LOAD CELL CAPACITY kg	PRICE £
TA-2000	2000	0.5	4000	795.00

12.3.2 TA-S TRUCK SCALE



STAINLESS STEEL PALLET TRUCK SCALE

- Heavy duty construction.
- IP68 stainless steel load cells.
- Lifting height 75-190mm.
- Forks 1180 x 160mm (l x w). Interior opening 240mm.
- IP66 Stainless steel indicator.



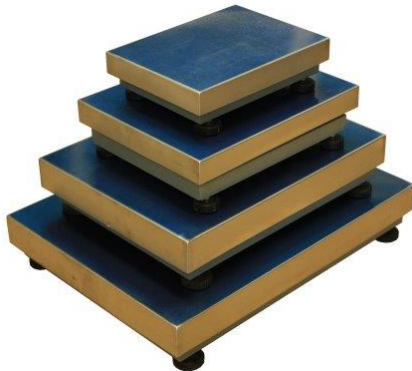
MODEL	MAXIMUM CAPACITY kg	DIVISION kg	TOTAL LOAD CELL CAPACITY kg	PRICE £
TA-2000-S	2000	0.5	4000	2395.00

Prices exclude delivery, VAT and stamping fees (unless stated)

PLATFORMS & BASES	INDICATORS	SYSTEC	RINSTRUM	PRINTER & PERIPHERALS	LOAD CELLS	WEIGHTS	CERTIFICATION & DELIVERY	SPARES
-------------------	------------	--------	----------	-----------------------	------------	---------	--------------------------	--------

12.4 BASES

12.4.1 STANDARD BASES



B-XL Series



FHD Series



RT Series



Optional Back Rail

HEAVY DUTY SINGLE LOAD CELL BASES

- IP65 R60 approved aluminium load cell.
- Sub-frame painted steel fabrication.
- Stainless steel goods plate.
- Supplied complete with stainless steel column & column to base bracket.
- Column bracket can be mounted on long side only.
- Ball table (RT) version available (without bracket or column).
- FHD model with heavier duty construction and column mounted on short side.
- XL pallet delivery only.



MODEL	PLATFORM SIZE mm	MAXIMUM CAPACITY kg	LOAD CELL CAPACITY kg	PRICE £
B6	400 x 300 x 120	6	10	115.00
B15		15	30	115.00
B30		30	50	115.00
B60		60	100	115.00
B100		100	150	115.00
F30	500 x 400 x 140	30	50	165.00
F60		60	100	165.00
F150		150	200	165.00
F300		300	500	165.00
L60	650 x 500 x 140	60	100	205.00
L150		150	200	205.00
L300		300	500	205.00
L500		500	600	205.00
XL60	800 x 600 x 140	60	100	245.00
XL150		150	200	245.00
XL300		300	500	245.00
XL500		500	600	245.00
FHD-30	500 x 400 x 140	30	50	245.00
FHD-60		60	100	245.00
FHD-150		150	200	245.00
RT-F60	520 x 420 x 170	60	100	295.00
RT-F150		150	200	295.00
EXTRAS	500 x 500mm Back Rail			95.00
	Top Bracket			25.00
	ATEX-B stainless steel IP67 - all capacities			195.00
	ATEX-F aluminium IP67 - all capacities			145.00
	ATEX-F/L/XL stainless steel IP68 - all capacities			575.00

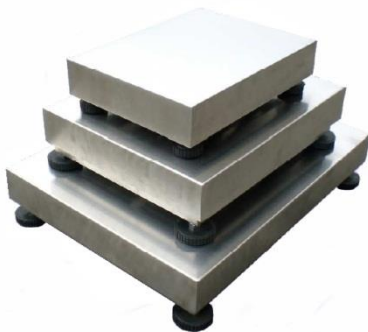
Prices exclude delivery, VAT and stamping fees (unless stated)

PLATFORMS & BASES	INDICATORS	SYSTEC	RINSTRUM	PRINTER & PERIPHERALS	LOAD CELLS	WEIGHTS	CERTIFICATION & DELIVERY	SPARES
-------------------	------------	--------	----------	-----------------------	------------	---------	--------------------------	--------

12.4.2 STAINLESS STEEL BASES



SA Series



SP, SB, SF & SL Series

ALL STAINLESS STEEL SINGLE LOAD CELL BASES

- Heavy duty construction.
- C3 approved stainless steel load cells.
- Column & bottom bracket included. Top bracket extra if required.
- Column bracket can be mounted on long side only.



MODEL	PLATFORM SIZE mm	MAXIMUM CAPACITY kg	LOAD CELL CAPACITY kg	IP RATING	PRICE £
SA-3	230 x 230 x 85	3	10	67	195.00
SA-6		6	10	67	195.00
SP-6	300 x 300 x 105	6	10	67	205.00
SP-15		15	20	67	205.00
SP-30		30	50	67	205.00
SB-6	400 x 300 x 120	6	15	67	225.00
SB-15		15	20	67	225.00
SB-30		30	50	67	225.00
SF-60	500 x 400 x 140	60	100	69	275.00
SF-150		150	200	69	275.00
SF-300		300	400	69	275.00
SL-60	650 x 500 x 140	60	100	69	415.00
SL-150		150	200	69	415.00
SL-300		300	400	69	415.00
EXTRAS	Standard Column (340mm) with Bracket for SB				0.00
	Standard Column (260mm) with Bracket for SA				0.00
	Low Column (25mm) with Extended Bracket				0.00
	Standard Column (650mm) with Bracket for SF & SL				0.00
	500 x 500mm Back Rail				95.00
	Top Bracket				25.00
	ATEX-SB stainless steel IP67 - all capacities				195.00
ATEX- F & SL stainless steel IP68 - all capacities				570.00	

12.4.3 HYBRID BASES



STAINLESS STEEL BASES WITH ENCAPSULATED LOAD CELL

- Heavy duty construction.
- C3 approved encapsulated aluminium load cell.
- Column & bottom bracket included. Top bracket extra if required.



MODEL	PLATFORM SIZE mm	MAXIMUM CAPACITY kg	LOAD CELL CAPACITY kg	IP RATING	PRICE £
SPA-6	300 x 300 x 130	6	10	67	135.00
SPA-15		15	20	67	135.00
SPA-30		30	50	67	135.00
SBA-6	400 x 400 x 135	6	15	67	155.00
SBA-15		15	20	67	155.00
SBA-30		30	50	67	155.00
EXTRAS	Standard Column (340mm) with Bracket for SPA & SBA				0.00
	Low Column (25mm) with Extended Bracket				0.00
	500 x 500mm Back Rail				95.00
	Top Bracket				25.00
	ATEX-SPA & SBA stainless steel IP67 - all capacities				195.00

Prices exclude delivery, VAT and stamping fees (unless stated)

PLATFORMS & BASES	INDICATORS	SYSTEC	RINSTRUM	PRINTER & PERIPHERALS	LOAD CELLS	WEIGHTS	CERTIFICATION & DELIVERY	SPARES
-------------------	------------	--------	----------	-----------------------	------------	---------	--------------------------	--------

12.4.4 HEAVY DUTY BASES



EXTRA HEAVY DUTY SINGLE LOAD CELL BASES

- IP65 C3 approved aluminium load cell.
- Heavy duty "X" shaped construction.
- Stainless steel goods plate.
- Column mounted on short side.
- 370mm circular column on BX models, 650mm circular column on larger sizes (top brackets not included)
- Powder coated mild steel.
- Other capacities available.
- XLX size pallet delivery only.



MODEL	PLATFORM SIZE mm	MAXIMUM CAPACITY kg	LOAD CELL CAPACITY kg	PRICE £
BX-6	400 x 300 x 130	6	10	145.00
BX-15		15	20	145.00
BX-30		30	50	145.00
FX-30	500 x 400 x 130	30	50	195.00
FX-60		60	100	195.00
FX-150		150	200	195.00
FX-300		300	500	195.00
LX-60	600 x 500 x 150	60	100	245.00
LX-150		150	200	245.00
LX-300		300	500	245.00
XLX-60	800 x 600 x 150	60	100	295.00
XLX-150		150	200	295.00
XLX-300		300	500	295.00
EXTRAS	Top bracket			25.00
	ATEX load cells stainless steel IP67 – BX models			195.00
	ATEX load cells aluminium IP67 – FX/LX/XLX models			145.00

12.4.5 HEAVY DUTY STAINLESS STEEL BASES



EXTRA HEAVY DUTY STAINLESS STEEL SINGLE LOAD CELL BASES

- C3 approved stainless steel load cell.
- Heavy duty "X" shaped construction.
- Column mounted on short side.
- 370mm circular column on SBX models, 650mm box section column on larger sizes (top bracket not included).
- SXLX size pallet delivery only.



MODEL	PLATFORM SIZE mm	MAXIMUM CAPACITY kg	LOAD CELL CAPACITY kg	IP RATING	PRICE £
SBX-6	400 x 300 x 130	6	10	67	295.00
SBX-15		15	20	67	295.00
SBX-30		30	50	67	295.00
SFX-30	500 x 400 x 130	30	50	69K	395.00
SFX-60		60	100	69K	395.00
SFX-150		150	200	69K	395.00
SFX-300		300	500	69K	395.00
SLX-60	600 x 500 x 150	60	100	69K	495.00
SLX-150		150	200	69K	495.00
SLX-300		300	500	69K	495.00
SXLX-150	800 x 600 x 150	150	200	69K	595.00
SXLX-300		300	500	69K	595.00
EXTRAS	Top bracket				25.00
	ATEX load cells stainless steel IP67 – SBX models				195.00
	ATEX load cells stainless steel IP68 – SFX/SLX/SXLX models				570.00

Prices exclude delivery, VAT and stamping fees (unless stated)

PLATFORMS & BASES	INDICATORS	SYSTEC	RINSTRUM	PRINTER & PERIPHERALS	LOAD CELLS	WEIGHTS	CERTIFICATION & DELIVERY	SPARES
-------------------	------------	--------	----------	-----------------------	------------	---------	--------------------------	--------